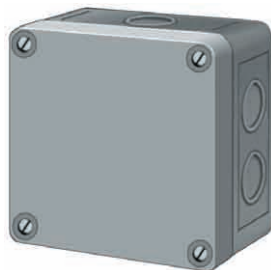


# Level Monitors Type NS1

## 1 Niveau, Wall-mount

NS1

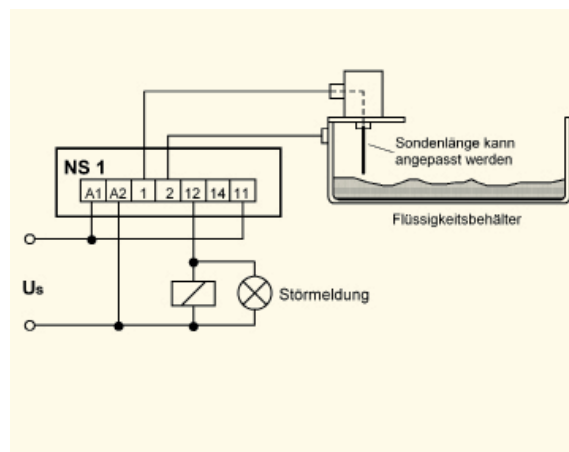


This level monitor for two electrodes preferably serves to the limit control, e.g. as overflow or idle running protection of a conducting liquid. The device is integrated in a shock-resistant plastic housing of the type 94 and can also be used for outside- resp. waterproof mounting according to its protection system IP 54.

The function of the relay is reversible (standard: releases, when E2 is reached) by changing of jumpers in the device. The switching point can be changed between 25...250 kOhm and the switching delay between 0,5... 10 s.

Order-number:

V223202



### Technical Data

Supply Voltage  $U_s$   
Adm. Tolerance  $U_s$   
Power Consumption  
Frequency

AC 230 V  
+10%...-15%  
≤ 3 VA  
50...60 Hz

Relays  
Contact type

1 CO  
Type 2 (see "General technical Informations")

Pick up delay approx.  
Release delay approx.  
Other times

0,5 s  
0,5...10s adjustable  
upon request

Text conditions  
max. ambient temperature

see "General technical Informations"  
-20°C...+55°C

Quantity Electrodes  
Voltage at the Electrodes

2  
< AC 6 V<sub>eff</sub>

Line capacity  
bei 25 kΩ  
bei 150 kΩ  
bei 250 kΩ

max. 100 nF = approx. 500 m  
max. 20 nF = approx. 100 m  
max. 10 nF = approx. 50 m

Dimensions (H x B x T)  
Fitting position  
Protection housing/ terminals  
Weight

Design I 94: 94 x 94 x 57 mm  
with screws  
IP 54/ IP 20  
approx. 310 g